



MAPPING

OPTIMIZE YOUR ROUTES TO SAVE MILES, TIME, AND WEAR ON TRUCKS

Here are just a few of the many features of Mango Mapping®:

- ✓ Track your trucks
- ✓ Map and optimize routes
- ✓ Plan multi-day routes
- ✓ Set up route areas and territories
- ✓ Instantly look up addresses
- ✓ Directly interact with your handheld device

Mango Mapping extends the functionality of your Route Manager software to help you visualize and optimize your routes for streamlined deliveries, so that you can:

- Reduce fuel costs
- Save labor hours
- Reduce the number of trucks on the road

Mango Mapping allows you to easily transform your pre-route reports into real-world points on a map. This helps you visualize where each customer is located and where your driver will be going – making it easy to plan more efficient routes.

POWERFUL MAPPING CAPABILITIES

Powerful Mapping Capabilities Built upon the world-renowned HERE Maps®, Mango Mapping gives you powerful mapping capabilities that take into account restrictions for bridges, parkways, and more.

ROUTE OPTIMIZATION

Mango Mapping lets you quickly and efficiently take a group of stops for a truck for any given day, and arrange them into the best order – taking into account drive times, traffic, opening hours, and more.

MULTI-DAY MAPPING

Make your routes much more efficient by taking multiple routes and dates and plotting them on the map together. This way, you can see if there is an overlap between your data and multiple routes to save on unnecessary mileage and time.

TRUCK TRACKING

Truck tracking allows you to see where all of your delivery trucks are throughout the day, helping you make better dispatching decisions.

BETTER CUSTOMER SERVICE

You can set up your normal delivery areas or even sales territories so that when a request comes in, you can look up the customer's address to know on which route and day they will be served.

FULL MAP INTEGRATION

Mango Mapping is fully integrated into Route Manager Series 7 so you can move data to the map and back again without exporting data and going through multiple unnecessary steps.

HOW IT WORKS

1. Guided Geocoding Helps Prepare Your Data

Quickly clean up your data and ensure that each delivery address is accurately geocoded with the correct latitude and longitude. This precision allows for exact plotting of stops on your routes. The geocoding details are then automatically updated in your Route Manager system.

2. Instantly Generate a Visual Route on the Map

In seconds, you'll see all your route customer locations plotted on a map.

3. Optimize Your Route

Next, select an individual route and optimize its stops. This allows you to clearly see the order of destinations, helping save drive time, reduce fuel costs, and avoid overtime by completing routes within a regular workday.

4. Monitor Trucks Routes in Real-Time

Truck tracking is also included. If you currently have a data plan for your handhelds (SIM card required for your Android handhelds), you can have each device send their position to the office every few seconds and they will show up on a map on your desktop.

AFFORDABLE PRICING

Starting at \$9.95 per truck per month.

MINIMUM REQUIREMENTS

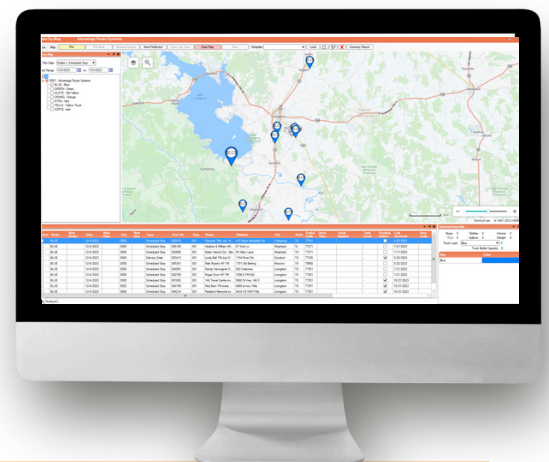
- Route Manager 7.0.4R8 or later
- WiFi or Data to run web version of HERE Maps®
- Certain features require that handhelds have Internet access and GPS enabled.

WHAT DOES IT LOOK LIKE?

Instead of going through a list of street names, Mango Mapping® helps you visually organize routes by seeing each stop on a map in relation to other customers.

START A FREE 14-DAY TRIAL

Contact our sales team today!
sales@advantageroute.com or
 1.209.632.1122 x2



Ref	Feature	Silver	Gold	Platinum
1	Geocoding	Up to 500 addresses per batch	Up to 2,000 addresses per batch	Up to 10,000 addresses per batch
2	Daily route optimization by shortest distance	Up to 100 stops per route	Up to 200 stops per route	Up to 300 stops per route
3	Real-time truck tracking	X	X	X
4	Lookup/plotting a single address	X	X	X
5	10 closest customers - (green pin)	X	X	X
6	Map Templates (with Territories)	1	5	Unlimited
7	Plotting multiple, simultaneous routes	X	X	X
8	Utilize opening hours in route optimization	--	X	X
9	Real-time weather and traffic	--	X	X
10	Multi-Day analysis and reorganization	--	X	X
11	Last invoice latitude/longitude display (hold to see)	--	X	X
12	Advanced sequencing on handheld	--	X	X
13	Automated overnight optimization	--	X	X
14	Service Times Integrated into Optimization	--	X	X
15	Permanent Route Optimization	--	X	X
16	Building Route by area/sub-area	--	X	X
17	Route View - End-of-day playback	--	--	X
18	Dynamic Fleet Optimization	--	--	X
19	Advanced Route Optimization	--	--	X
20	Saving Temp Multiday Mapping State	--	--	X
21	Route Analysis Mode	--	--	X
22	Plot External Data Source	--	--	X
	Price Per Truck	USD \$9.99/mo	USD \$24.99/mo	USD \$39.99/mo

WWW.ADVANTAGEROUTE.COM/ROUTE-OPTIMIZATION

WHO IS ARS?

Advantage Route Systems is the global leader in route automation solutions, trusted by thousands of route delivery companies worldwide to deliver progressive solutions for route accounting, handheld devices, and GPS-based technologies. ARS products have become an essential part of in-field and office operations in industries such as bottled water, water treatment, ice, propane, oil recycling, coffee, and more. Built on a commitment to help our customers' businesses run optimally, we provide 24/7 world-class support that is second to none.

11/5/24